

NDBP Research Suite Directions & Parking

Research visits are held in the Saunders Research Building (SRB) at the University of Rochester Medical Center (pictured below). The SRB is located at 265 Crittenden Boulevard, at the corner of Crittenden Boulevard and Kendrick Road.



Parking

You can park in the visitor lot to the right of the front entrance. Take a ticket from the dispenser, enter past the booth, and park anywhere in the lot. We'll give you parking validation at the end of your visit.



Entering the SRB

Neurodevelopmental & Behavioral Pediatrics Research University of Rochester School of Medicine and Dentistry

Box 671

601 Elmwood Avenue

Rochester, NY 14642



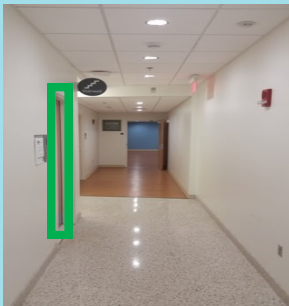
Step 1: Enter through the West Entrance.



To Use the Stairway



Step 2: Turn right down the first hallway.

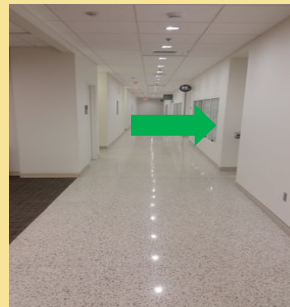


Step 3: Take the stairwell on the left down one flight of stairs to the basement level.

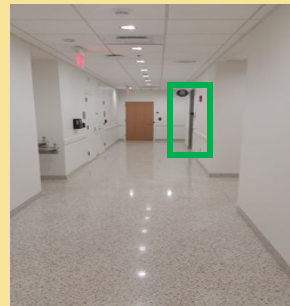


Step 4: Exit the stairwell, then turn left down the main hallway.

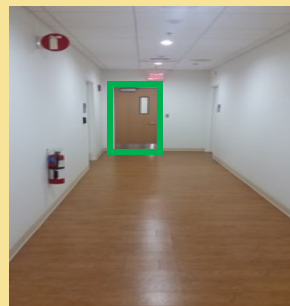
To Use the Elevator



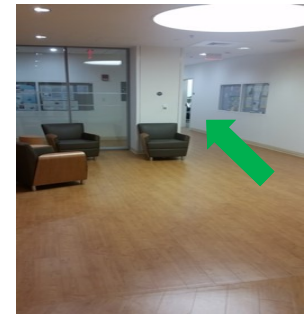
Step 2: Turn right down the second hallway.



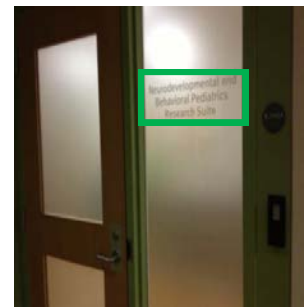
Step 3: Take the elevator on the right down to the basement level.



Step 4: Exit the elevator, then turn left and go through the brown door at the end of the hallway.



Step 5: Follow the main hallway past the glass partition wall, then keep left.



Step 6: Find Suite B.340A: Neurodevelopmental and Behavioral Pediatrics Research Suite on the right-hand side of the hallway.